

PITTSBURGH

PAINTS & STAINS®

SIDINGSAFE® COLOR TECHNOLOGY

ADVANCED COLOR TECHNOLOGY
SOLUTIONS FOR VINYL SIDING
AND ARCHITECTURAL PLASTICS



SIDINGSAFE[®]

COLOR TECHNOLOGY

SidingSafe Color Technology enables you to choose from 30 curated colors for your vinyl siding, architectural plastic and composite building materials.



There is a risk when painting vinyl siding darker colors that exposure to sun and heat can cause it to warp and buckle.



SidingSafe Color Technology, developed by PPG Color Laboratories creates color formulas specifically for these substrates reducing the risk of warping and buckling on properly installed vinyl siding. By using *SidingSafe* colors, you can finally add a splash of color to your home with confidence.



Choose from our *SidingSafe* palette of 30 beautiful shades. It's time to say hello to color and transform your existing house into your new, colorful dream home.

SIDINGSAFE® COLORS ARE AVAILABLE IN THE FOLLOWING PITTSBURGH PAINTS & STAINS® PRODUCTS:

- PARAMOUNT® EXTERIOR
- GRAND DISTINCTION® EXTERIOR

PAINT & PREP GUIDELINES



Surface must be clean and dry.



Remove all loose, peeling paint, dirt, mildew and any other surface contaminants.

TIP: Easily remove mildew by using 1 part chlorine bleach to 3 parts water.



Paint on good weather days when temperature is between 35-90° F.
Avoid humidity, rain, and direct sunlight.



Remember to use 100% acrylic products, like *PARAMOUNT* or *GRAND DISTINCTION*, and always apply based on label directions for best results.



Apply with a high quality brush, roller, paint pad, or by spray equipment.
We recommend using a polyester or nylon brush, or a 3/8" nap roller cover.

WARNING! If you scrape, sand, or remove old paint, you may release lead dust or fumes. LEAD IS TOXIC. EXPOSURE TO LEAD DUST OR FUMES CAN CAUSE SERIOUS ILLNESS, SUCH AS BRAIN DAMAGE, ESPECIALLY IN CHILDREN. PREGNANT WOMEN SHOULD ALSO AVOID EXPOSURE. Wear a properly fitted, NIOSH-approved respirator and prevent skin contact to control lead exposure. Clean up carefully with a HEPA vacuum and a wet mop. Before you start, find out how to protect yourself and your family by contacting the US EPA. National Lead Information Hotline at 1-800-424-LEAD or log on to www.epa.gov/lead.

TRY A SAMPLE TODAY!



Make sure you've chosen the perfect colors with our color tester samples.

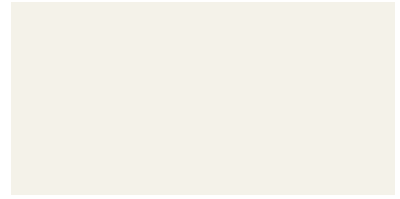
Body (Horizontal Siding):
SidingSafe Rock Path, PPS-SS-09
Body (Vertical Siding):
SidingSafe Simply Slate, PPS-SS-13
Trim: *SidingSafe Cotton White, PPS-SS-01*
Accent: *SidingSafe Dark Sky, PPS-SS-27*



SIDINGSAFE® WARM WHITE
PPS-SS-03



SIDINGSAFE® LIGHT ALMOND
PPS-SS-04



SIDINGSAFE® PEARL WILLOW
PPS-SS-02



SIDINGSAFE® BEIGE SUEDE
PPS-SS-05



SIDINGSAFE® GOLD
PPS-SS-21



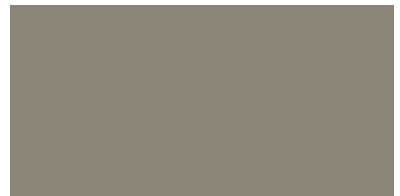
SIDINGSAFE® CREAMY GREIGE
PPS-SS-08



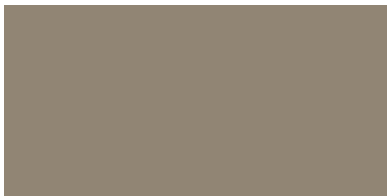
SIDINGSAFE® ROCK PATH
PPS-SS-09



SIDINGSAFE® WARM OCHER
PPS-SS-20



SIDINGSAFE® COZY GREIGE
PPS-SS-12



SIDINGSAFE® SOFT BROWN
PPS-SS-06



SIDINGSAFE® MUSHROOM BEIGE
PPS-SS-19



SIDINGSAFE® PECAN BROWN
PPS-SS-18



SIDINGSAFE® CLEAN GREIGE
PPS-SS-07



SIDINGSAFE® COTTON WHITE
PPS-SS-01



SIDINGSAFE® SIMPLY SLATE
PPS-SS-13



SIDINGSAFE® FRESH GREIGE
PPS-SS-11



SIDINGSAFE® SILVER SKY BLUE
PPS-SS-25



SIDINGSAFE® DARK GRAY
PPS-SS-15



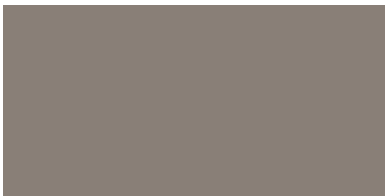
SIDINGSAFE® CLASSIC GREIGE
PPS-SS-10



SIDINGSAFE® DUSTY BLUE
PPS-SS-29



SIDINGSAFE® STORMY BLUE
PPS-SS-26



SIDINGSAFE® CHESTNUT GRAY
PPS-SS-17



SIDINGSAFE® DARK SKY
PPS-SS-27



SIDINGSAFE® BLUE PUDDLE
PPS-SS-30



SIDINGSAFE® WATER BLUE
PPS-SS-28



SIDINGSAFE® STONEWORK GRAY
PPS-SS-14



SIDINGSAFE® STORM FOG
PPS-SS-24



SIDINGSAFE® GREEN SAGE
PPS-SS-22



SIDINGSAFE® VINTAGE GRAY
PPS-SS-16



SIDINGSAFE® SAGE SMOKE
PPS-SS-23



Body (Horizontal Siding): *SidingSafe Gold*, PPS-SS-21
Body (Vertical Siding): *SidingSafe Light Almond*, PPS-SS-04
Trim: *SidingSafe Warm White*, PPS-SS-03
Accent: *SidingSafe Soft Brown*, PPS-SS-06

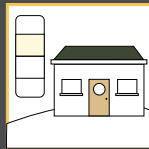
SIDINGSAFE®
COLOR TECHNOLOGY

PITTSBURGH

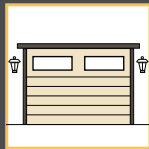
PAINTS & STAINS®

THERE'S NO BETTER FEELING THAN **FINDING THE PERFECT PAINT COLOR**

An exterior palette consists of three main colors: body, trim and accents (fascia, shutters, doors). Body or siding color should be the dominant color and influence the choice of the others. Start by choosing your home's personality with one of the colors on the inside of this card and remember these helpful tips.



Look to your permanent exterior elements before choosing your color palette. Colors do not have to match existing stone, brick, roof, and landscaping, rather coordinate your paint colors with the permanent ones to unify and complement.



Garage door colors should blend with your home and integrate into the overall structure. Avoid bright and contrasting colors.



Front doors do not have to be the same color as your shutters. Consider a different, complementary color to give your home even more appeal.

ON THE COVER:

Body (Horizontal Siding): *SidingSafe* Dark Gray, PPS-SS-15

Accent (Vertical Siding): *SidingSafe* Stonework Gray, PPS-SS-14

Trim: *SidingSafe* Cotton White, PPS-SS-01

This document is accurate as of the date of issue. We are providing this information at your request, and, as such, nothing in this document should be deemed to be or construed as a representation, guarantee, or warranty regarding such product and its characteristics, uses, suitability, safety, efficacy, hazards or health effects. Certain other factors, including, but not limited to, climate, temperature, substrate, application, installation, or any other factor outside of PPG's direct control and/or responsibility can impact the performance of this product and its suitability for a particular application. Color chips shown are subject to the effects of heat, light, age and other processes, and may vary slightly from the actual color. A trial area is suggested before proceeding with entire job.

